

Premium Door and Window Furniture



Hardware supplied by:



Hardware by COASTAL

Coastal specialises in the design and manufacture of precision-made hardware solutions for external doors and windows.

They continuously innovate in the design and manufacture of their hardware to deliver the solutions of tomorrow. Every piece is designed to enhance aesthetic of the doors and windows they're fitted to.

Consistently. Every time.

BLU[®]

316 Marine Grade Stainless Steel external door and window hardware solutions designed to enhance the aesthetics of doors and windows.

BLU Hardware comes with:

- a 'Best in Class' Lifetime Guarantee, providing peace of mind that your Exterior Door and Window Hardware Solutions will last at least as long as the Doors and Windows themselves.



DURATIQUE[®]

Black Antique Hardware that's built to last. The stainless steel base material of DURATIQUE hardware combined with an electrostatic polymer top coating has enabled us to achieve a world class corrosion resistance rating.

- Durability - Manufactured from Stainless Steel and Salt Spray Tested to Class 5



BLU® Finishes

BLU® range has been carefully developed and refined over many years to bring you a wide selection of product finishes which meet market demands for both classic and contemporary styles. One of the unique features of the BLU® range is its anti-corrosive properties and, with a little love, care and maintenance, our hardware range will last for many years to come. BLU® Hardware is designed to last in both internal and external applications.



Satin
Stainless Steel

Raw 316 Marine Grade Stainless Steel with an extra fine finishing process applied to give it our unique 'super-satin' silky finish.



PVD Stainless
Satin Brass

316 Marine Grade Satin Stainless Steel with a PVD Brass coating applied to it to give a warm matt finish which looks equally at home with classic or contemporary styles.

The PVD (Physical Vapour Deposition) coating provides an additional extremely hardwearing protective layer to the hardware.



Matt Black
Lacquer

316 Marine Grade Satin Stainless Steel with dual coating paint system incorporating an automotive Lacquered for enhanced longevity.



Polished
Stainless Steel

Raw 316 Marine Grade Stainless Steel polished-to-perfection to ensure a stunning mirror smooth reflective finish.



PVD Stainless
Polished Brass

316 Marine Grade Polished Stainless Steel with a PVD Brass coating applied to give a warm polished-to-perfection finish which is synonymous with classic period styles.

Classic Backplate

Offers a taller, clean-edged profile with a modern, architectural look.



Bevelled Backplate

A slim, chamfered-edge design that suits both classic and contemporary doors





Levers



Opera

A rounded, bulb-shaped handle with subtle concentric detailing. Classic, comfortable, and ideal for period or transitional doors.



Pera

Minimalist and modern, the Pera handle is defined by its clean arc and soft smooth lines – a quiet showstopper.



Regent

Inspired by the curve of an oar, the Regent handle features wave-like lines that feel as elegant as they look.

Each handle is CNC machined for precision and crafted from 316 marine-grade stainless steel – ideal for harsh environments and coastal locations.

Backplates



092 (Bevelled) Backplate

The 092 backplate features a slim, chamfered-edge design that suits both classic and contemporary doors. It includes a built-in spring cassette for smooth handle return and an extended cylinder wall for enhanced security.



095 (Classic) Backplate

The 095 backplate offers a taller, clean-edged profile with a modern, architectural look. Like the 092, it's equipped with a replaceable spring cassette and extended cylinder wall for added protection and performance.

Finishes

Satin
Stainless Steel

PVD Stainless
Satin Brass

Matt Black
Lacquer

PVD Stainless
Polished Brass

Polished
Stainless Steel



OPERA Lever Handle on Classic Backplate

CODE: TBH095



Satin Stainless Steel

PVD Stainless Satin Brass

Matt Black Lacquer



Polished Stainless Steel

PVD Stainless Polished Brass



OPERA Lever Handle on Bevelled Backplate

CODE: TBH092



Satin Stainless Steel

PVD Stainless Satin Brass

Matt Black Lacquer



Polished Stainless Steel

PVD Stainless Polished Brass



REGENT Lever Handle on Classic Backplate

CODE: REG095



Satin Stainless Steel

PVD Stainless Satin Brass

Matt Black Lacquer



Polished Stainless Steel

PVD Stainless Polished Brass



REGENT Lever Handle on Bevelled Backplate

CODE: REG092



Satin Stainless Steel

PVD Stainless Satin Brass

Matt Black Lacquer



Polished Stainless Steel

PVD Stainless Polished Brass





PERA Lever Handle on Classic Backplate

CODE: PER095



Satin Stainless Steel

PVD Stainless Satin Brass

Matt Black Lacquer



Polished Stainless Steel

PVD Stainless Polished Brass



PERA Lever Handle on Bevelled Backplate

CODE: PER092



Satin Stainless Steel

PVD Stainless Satin Brass

Matt Black Lacquer



Polished Stainless Steel

PVD Stainless Polished Brass

Matching

Window

Handles



OPERA Window Handle

CODE: TBH020



Satin
Stainless Steel

PVD Stainless
Satin Brass

PVD Stainless
Satin Black

Polished
Stainless Steel

PVD Stainless
Polished Brass



OPERA Casement Window Stay

CODE: TBH300

Available in two sizes:
8 inches - TBH300-8
11 inches - TBH300-11



TBH300-11-SSS
Satin Stainless Steel

TBH300-11-PSS
Polished Stainless Steel

TBH300-11-PSB
PVD Stainless Satin Brass

TBH300-11-PPB
PVD Stainless Polished Brass

TBH300-11-PBK
PVD Stainless Satin Black

REGENT Window Handle

CODE: REG020



Satin
Stainless Steel



PVD Stainless
Satin Brass



PVD Stainless
Satin Black



Polished
Stainless Steel



PVD Stainless
Polished Brass



REGENT Casement Window Stay

CODE: REG300



REG300-11-SSS
Satin Stainless Steel



REG300-11-PSS
Polished Stainless Steel



REG300-11-PSB
PVD Stainless Satin Brass



REG300-11-PPB
PVD Stainless Polished Brass



REG300-11-PBK
PVD Stainless Satin Black

Available in two sizes:
8 inches - REG300-8
11 inches - REG300-11



PERA Bulb End Window Handle

CODE: PER50



Satin Chrome



Satin Brass



Black



Polished Chrome



Polished Brass



Dark Matt Bronze



TRADITIONAL BULB END Casement Window Stay

Available in three sizes:
8 inches - CC48
10 inches - CC410
12 inches - CC412



Satin Chrome



Polished Chrome



Satin Brass



Polished Brass



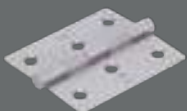
Satin Black



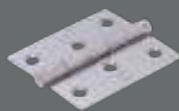
Antique Brass

Slim Knuckle Window Hinge

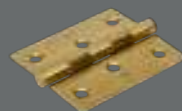
Code: HY3



Satin Stainless Steel



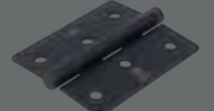
Polished Stainless Steel



PVD Stainless Satin Brass



PVD Stainless Polished Brass



Matt Smooth Black

Classic Entrance Door Furniture

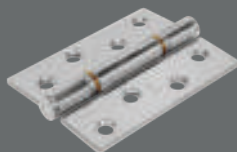


Door Butt Hinge

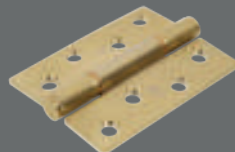
CODE: HQ4



Satin
Stainless Steel



Polished
Stainless Steel



PVD Stainless
Polished Brass



PVD Stainless
Satin Brass



Matt Black Lacquer

Classic Cylinder Pull

CODE: CP30



Satin Stainless Steel Polished Stainless Steel PVD Stainless Satin Brass PVD Stainless Polished Brass Matt Black Lacquer

Contemporary Cylinder Pull

CODE: CP50



Satin Stainless Steel Polished Stainless Steel Matt Black Lacquer

Decorative Door Knob

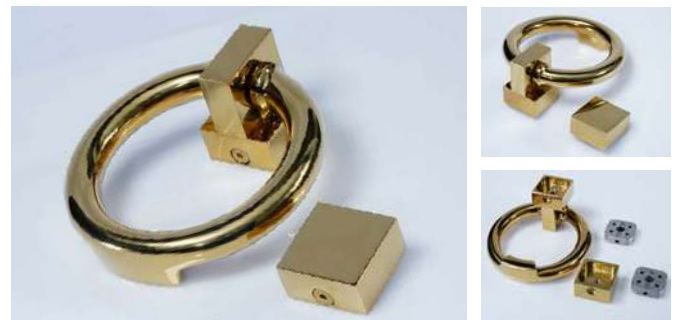
CODE: KM388



Satin Stainless Steel Polished Stainless Steel PVD Stainless Satin Brass PVD Stainless Polished Brass Matt Black Lacquer

Ring Door Knocker

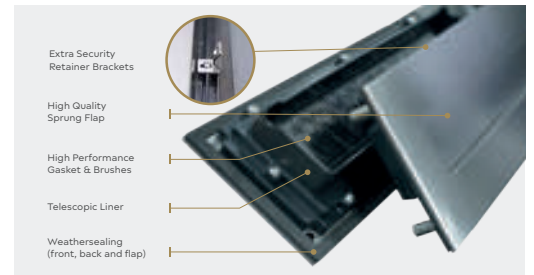
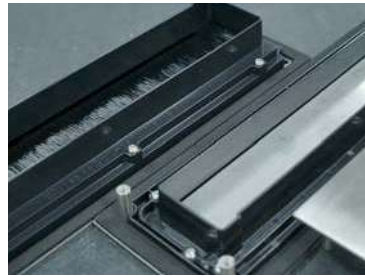
CODE: DKB250



Satin Stainless Steel Polished Stainless Steel PVD Stainless Satin Brass PVD Stainless Polished Brass Matt Black Lacquer

Sleeved Letter Plate

CODE: LP400



Satin Stainless Steel Polished Stainless Steel PVD Stainless Satin Brass PVD Stainless Polished Brass Matt Black Lacquer

DURATIQUE[®]

Black Antique

Door Furniture



Cylinder Pull

CODE: CP30-TMB



Centre Door Knob

CODE: KM388-TMB



Ring Door Knocker

CODE: DKB225-TMB



Slimline Round Escutcheon

CODE: SE35-TMB



Sleeved Letterplate

CODE: LP400-TMB



Lever Door Handles

Barley Twist

CODE: CO7100C



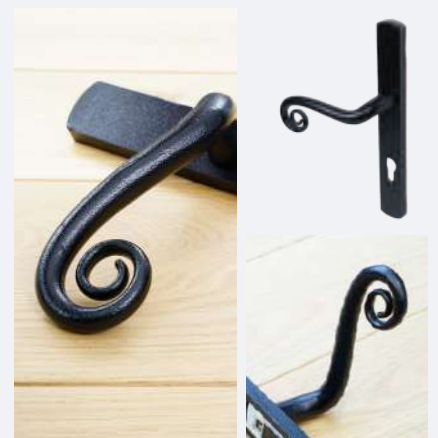
Bow Design

CODE: CO7200C



Curly Tail

CODE: CO7300C



ThunderBolt Locking Multipoint Lock



Daytime Latch Keep
Option



Tested to
100,000 Cycles



Heritage
thunderbolt

Lift to lock
thunderbolt

3 Star Euro Profile Thumbturn Cylinders (KPT)



Door Threshold

Inward Opening Threshold -
Thermal Break

Outward Opening Threshold -
Thermal Break

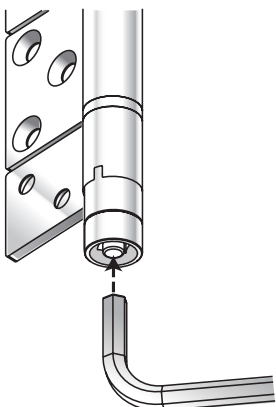


CENTOR Bifold Door System



Features & Benefits

- Can be used on window systems.
- Accommodates top-hung panels up to 1200mm wide by 3600mm high and 115kg, allowing for the extra weight of double and triple glazing, and laminated glass.
- Has been tested and passed PAS24-2016, allowing you to have peace of mind.
- 10 Year warranty.
- Effortless operation.



Fully Adjustable

- The patented Surelock 5 allows for self-locking vertical adjustment with an 8mm Allen key. To raise or lower the panels, simply insert the Allen key into the end of the carrier to depress the pin and wind up or down. Once adjusted, the new setting is locked into place as the Allen key is removed.
- Independent top and bottom lateral adjustment of +/-5mm is possible using a Phillips screwdriver.

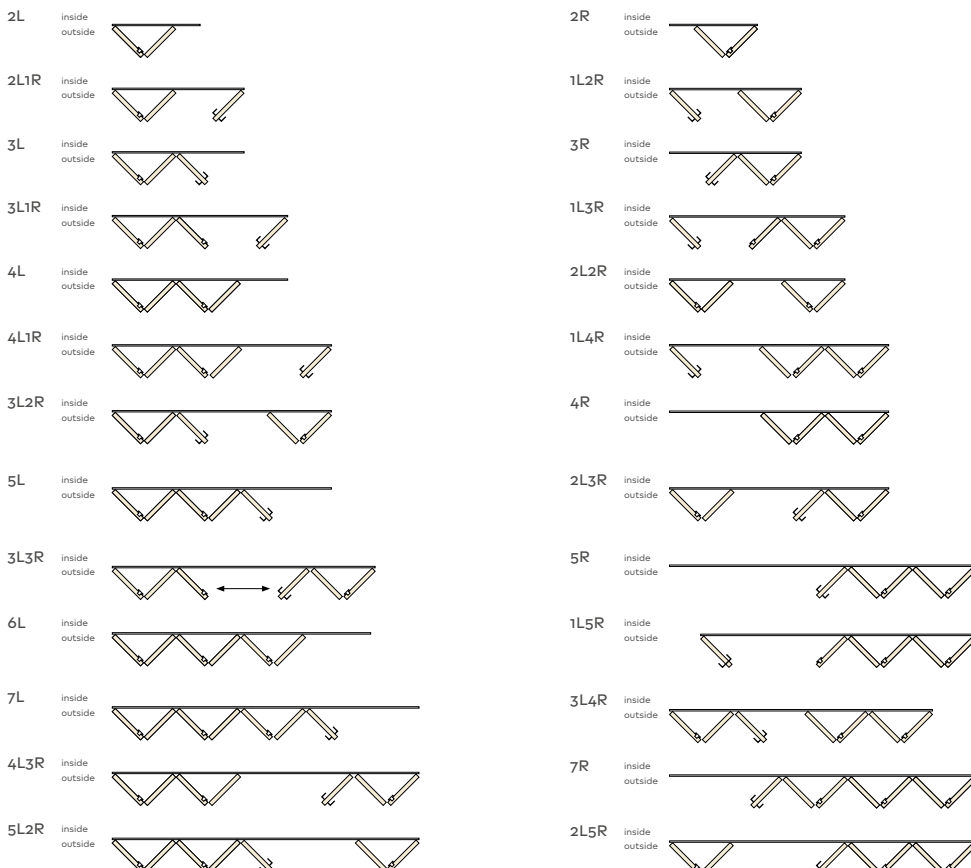


Optional TwinPoint Locking System

- Concealed top and bottom bolts lock the door from inside the system.
- An alternative to flush bolts which is operated by one simple turn using top and bottom throw rods to engage two points of locking.
- Slim profile gearbox makes it suitable for most stile designs.
- Designed to meet high demands for weathersealing, security and wind load.
- Suitable for inward and outward opening versions.
- Locking and non-locking versions.



Door Configurations





Beautifully handcrafted timber products

Kirkman Joinery

Unit 5 Highlands Farm
Brightwell-cum-Sotwell
Wallingford
OX10 0QX

T 01491 877 650

E info@kirkmanjoinery.co.uk

W kirkmanjoinery.co.uk